

MONTHLY MEMBERSHIP PROGRESS REPORT

LOCATION INDIA

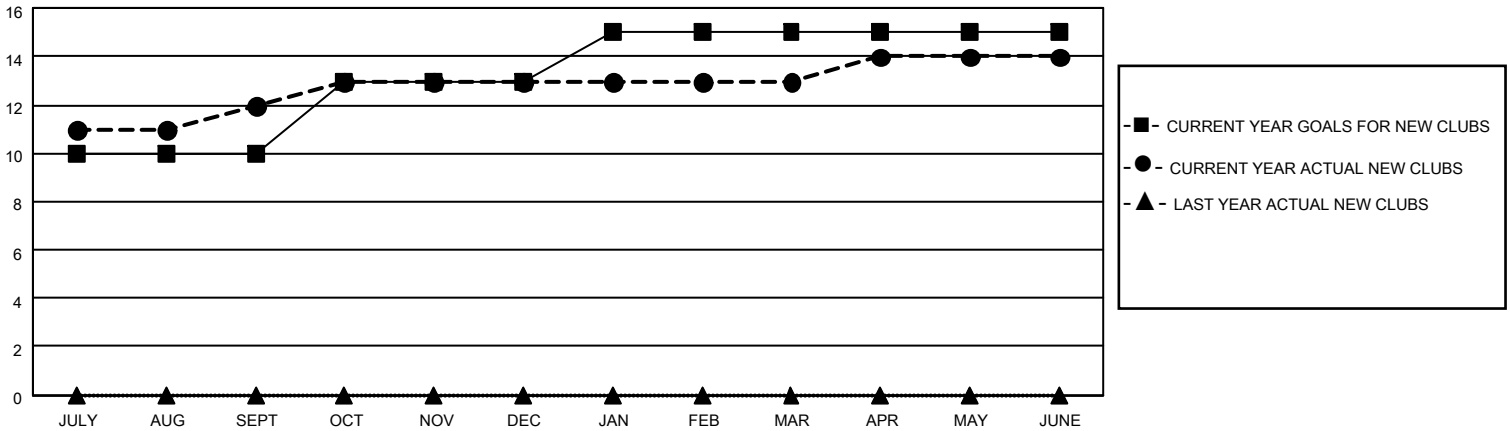
District 322 F

Results as of: 6/30/2023

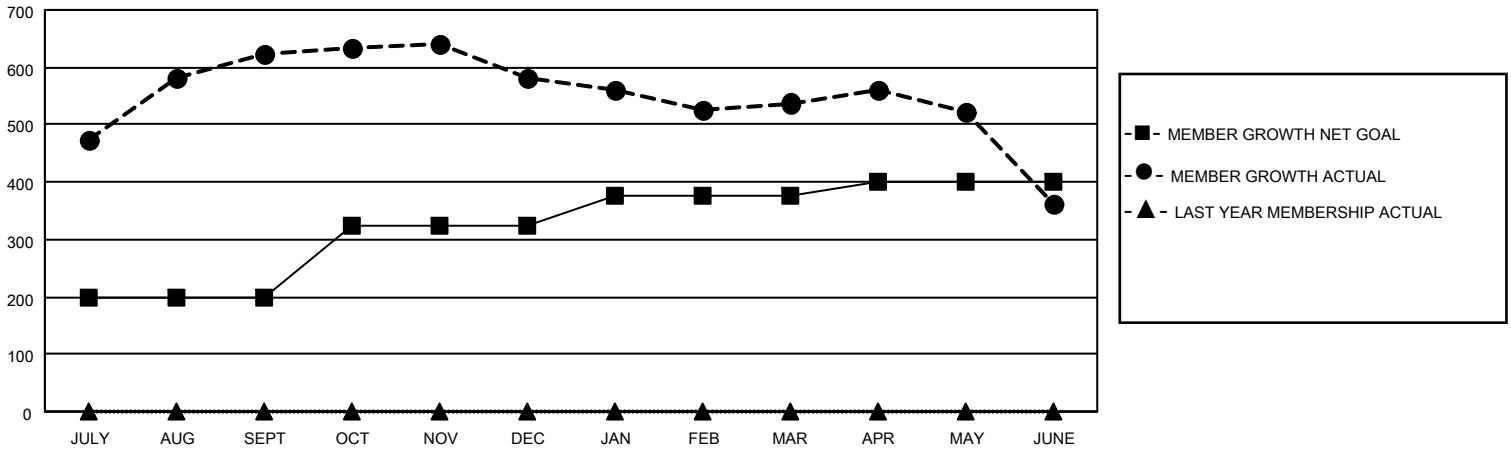
Clubs			
RESULTS FOR 2022-2023			
QUARTER	NEW CLUB GOAL	NEW CLUBS	DROPPED CLUBS
JULY/AUG/SEPT	10	12	0
OCT/NOV/DEC	3	1	3
JAN/FEB/MAR	2	0	2
APR/MAY/JUNE	0	1	1

Members			
RESULTS FOR 2022-2023			
QUARTER	MEMBER GROWTH NET GOAL	MEMBER GROWTH ACTUAL	DROPPED MEMBERS ACTUAL (including transfers)
JULY/AUG/SEPT	200	672	45
OCT/NOV/DEC	125	71	108
JAN/FEB/MAR	50	79	92
APR/MAY/JUNE	25	135	296

GOALS AND ACTUAL NEW CLUBS CUMULATIVE



GOALS AND ACTUAL MEMBERS CUMULATIVE



DROPPED CLUBS: 6

88 CLUBS OF 114 ADDED 1 OR MORE NEW MEMBERS

GENDER DISTRIBUTION

DROPPED MEMBERS

DECEASED	6
CLUB CANCELLED	104
OTHER	431
TOTAL	541

MALE	2,621 (70.57%)
FEMALE	1,093 (29.43%)
NON BINARY	0 (0.00%)
PREFER NOT TO ANSWER	0 (0.00%)

[CLICK HERE FOR CUMULATIVE MEMBERSHIP DATA](#)

TOTAL FAMILY UNIT MEMBERS	1,758
FAMILY MEMBERS PAYING HALF DUES	1,151